

SPECIFICATION SHEET

# 171521

## Acrylic Shower Base

### General Specifications:

**FEATURES:**

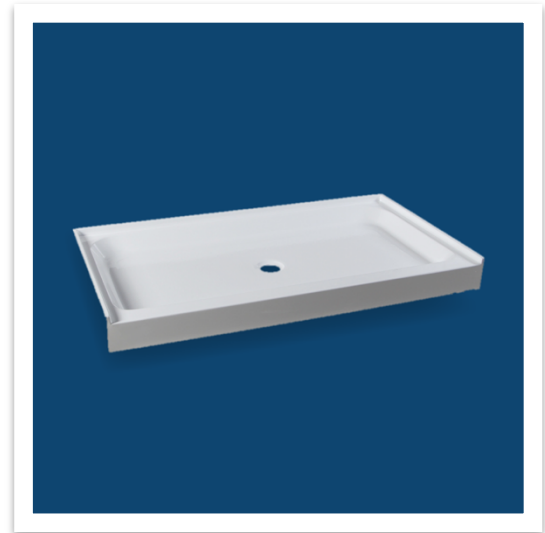
- Ready to Install
- 3 Sided - Tile Flange for Water Protection
- One Piece Construction

**MATERIAL:**

- High-grade Acrylic with Fiberglass Reinforcement

**CODE STANDARDS:**

- CSA B45.5/IAPMO Z124



### Technical Information:

<b>Material:</b>	High-grade Acrylic with Fiberglass Reinforcement	<b>Finish Color:</b>	White
<b>Installed Size:</b>	Approx. 60 x 30 x 5.5 in (1524 x 762 x 140 mm)		
<b>Floor Footprint:</b>	Approx. 60 x 30 in (1524 x 762 mm)		
<b>Drain Location:</b>	Centered		
<b>Drain Hole:</b>	3.35" (85 mm)		
<b>Installation:</b>	3 Wall Alcove		
<b>Threshold:</b>	60" Single 3.94" h (1524 x 100 mm)		
<b>Tile Flange:</b>	1.18" (30 mm)		
<b>Surface:</b>	Nonslip Textured		

*Dimensions of fixtures are nominal and may vary within the range of tolerances established by ANSI Standards Z124.1.2-2005.*

**NOTES:**

- The Sub-floor is required to be within 1/2" of level from end to end.
- Measure the actual product for rough-in details before you start your installation.
- Install this product using basic industry standards.

**IMPORTANT:**

- These measurements are subject to change. No responsibility is assumed for use of superseded or voided leaflet.

