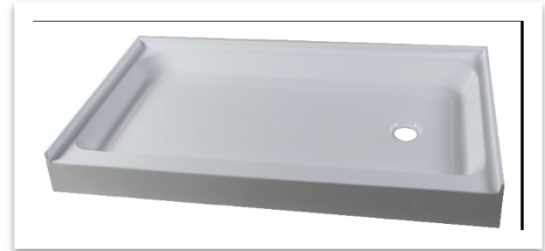


SPECIFICATION SHEET

171523R

Acrylic Shower Base



General Specifications:

FEATURES:

- Ready to Install
- 3 Sided - Tile Flange for Water Protection
- One Piece Construction

MATERIAL:

- High-grade Acrylic with Fiberglass Reinforcement

CODE STANDARDS:

- CSA B45.5/IAPMO Z124

Technical Information:

Material:	High-grade Acrylic with Fiberglass Reinforcement	Finish Color:	White
Installed Size:	Approx. 60 x 32 x 5.5 in (1524 x 813 x 140 mm)		
Floor Footprint:	Approx. 60 x 32 in (1524 x 813 mm)		
Drain Location:	Right		
Drain Hole:	3.35" (85 mm)		
Installation:	3 Wall Alcove		
Threshold:	60" Single 3.94" h (1524 x 100 mm)		
Tile Flange:	1.18" (30 mm)		
Surface:	Nonslip Textured		

Dimensions of fixtures are nominal and may vary within the range of tolerances established by ANSI Standards Z124.1.2-2005.

NOTES:

- The Sub-floor is required to be within 1/2" of level from end to end.
- Measure the actual product for rough-in details before you start your installation.
- Install this product using basic industry standards.

IMPORTANT:

- These measurements are subject to change. No responsibility is assumed for use of superseded or voided leaflet.

