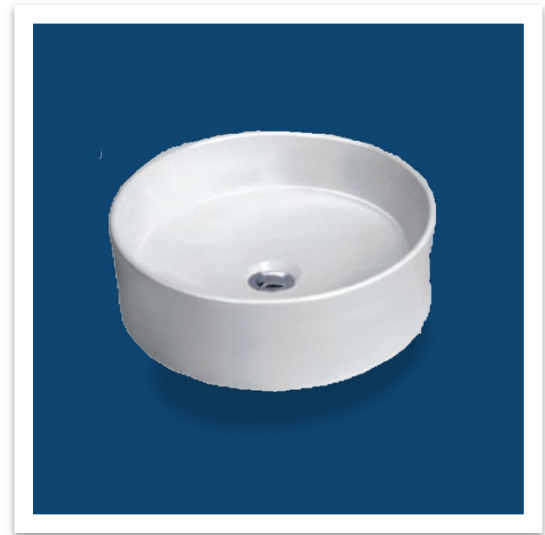


SPECIFICATION SHEET

# 170183

## Porcelain Round Vessel Sink



### General Specifications:

**FEATURES:**

- Top-mount Round Vessel Basin
- No Faucet Holes
- Required Deck Mount Faucet

**MATERIAL:**

- High-quality Porcelain

**CODE STANDARDS:**

- ASME A112.19.1-2013/CSA B45.1-13
- Will Comply with Americans with Disabilities Act (ADA)

### Technical Information:

<b>Material:</b>	Vitreous Porcelain
<b>Installed Size:</b>	Approx. 18.0 x 18.0 x 6.25 in (460 x 460 x 156 mm)
<b>Cut Out Dimensions:</b>	
<b>Drain Hole:</b>	1.75 in (45 mm)
<b>Drain Location:</b>	Centered
<b>Overflow:</b>	N/A
<b>Finish Color:</b>	White
<b>Basin Depth:</b>	Approx. 6.25 in (156 mm)
<b>Sink Overall Shape:</b>	Round
<b>Cabinet Requirement:</b>	22 in

*Dimensions of fixtures are nominal and may vary within the range of tolerances established by ANSI Standards Z124.1.2-2005.*

**NOTES:**

- Refer to standard industry installation instructions for this product.

**IMPORTANT:**

- These measurements are subject to change. No responsibility is assumed for use of superseded or voided leaflet.

