



Interquatic™

# SHOWER BASES

## STOCKED SHOWER BASES

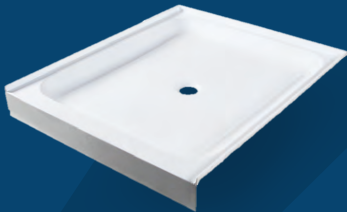
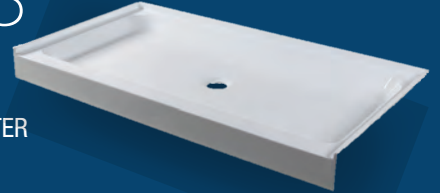


### 171501

36 x 36 x 5.5"  
THRESHOLD: SINGLE  
DRAIN LOCATION: CENTER

### 171523

60 x 32 x 5.5"  
THRESHOLD: SINGLE  
DRAIN LOCATION: CENTER



### 171505

36 x 42 x 5.5"  
THRESHOLD: SINGLE  
DRAIN LOCATION: CENTER

### 171525

60 x 36 x 5.5"  
THRESHOLD: SINGLE  
DRAIN LOCATION: CENTER

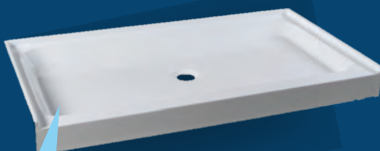
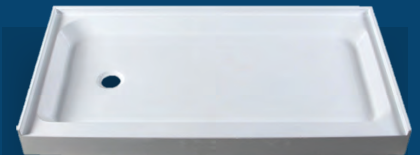


### 171511

48 x 36 x 5.5"  
THRESHOLD: SINGLE  
DRAIN LOCATION: CENTER

### 171525-L

60 x 36 x 5.5"  
THRESHOLD: SINGLE  
DRAIN LOCATION: LEFT



### 171521

60 x 30 x 5.5"  
THRESHOLD: SINGLE  
DRAIN LOCATION: CENTER

### 171525-R

60 x 36 x 5.5"  
THRESHOLD: SINGLE  
DRAIN LOCATION: RIGHT



TEXTURE ON ALL BASES

## SQUARE SHOWER BASES



**SINGLE THRESHOLD**



**DOUBLE THRESHOLD**

FHA Compliance Assist™ bases are 2" wider than the 36" minimum wall-to-wall clearance to ensure compliance after sheetrock and shower surround material are applied to the walls.

### 171501

36 x 36 x 5.5"  
THRESHOLD: SINGLE  
DRAIN LOCATION: CENTER

### 171519

48 x 48 x 5.5"  
THRESHOLD: SINGLE  
DRAIN LOCATION: CENTER

### 171503-D

36 x 36 x 5.5"  
THRESHOLD: DOUBLE  
DRAIN LOCATION: CENTER

### 171519-D

48 x 48 x 5.5"  
THRESHOLD: DOUBLE  
DRAIN LOCATION: CENTER

### 171515

42 x 42 x 5.5"  
THRESHOLD: SINGLE  
DRAIN LOCATION: CENTER

### 171535

60 x 38 x 5.5"  
THRESHOLD: SINGLE  
DRAIN LOCATION: CENTER  
FHA COMPLIANCE ASSIST™

### 171515-D

42 x 42 x 5.5"  
THRESHOLD: DOUBLE  
DRAIN LOCATION: CENTER

### 171561

38 x 38 x 5.5"  
THRESHOLD: SINGLE  
DRAIN LOCATION: CENTER  
FHA COMPLIANCE ASSIST™





# RECTANGLE SHOWER BASES

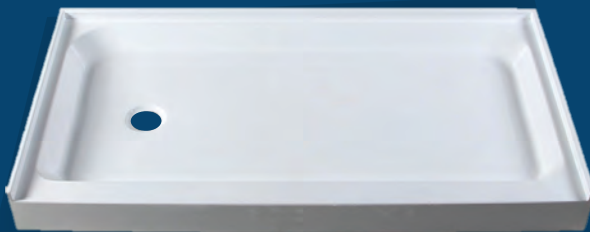
60" LENGTH



CENTER DRAIN

## 171521

60 x 30 x 5.5"  
THRESHOLD: SINGLE  
DRAIN LOCATION: CENTER



LEFT DRAIN

## 171521-L

60 x 30 x 5.5"  
THRESHOLD: SINGLE  
DRAIN LOCATION: LEFT



RIGHT DRAIN

## 171521-R

60 x 30 x 5.5"  
THRESHOLD: SINGLE  
DRAIN LOCATION: RIGHT

## 171525

60 x 36 x 5.5"  
THRESHOLD: SINGLE  
DRAIN LOCATION: CENTER



DOUBLE THRESHOLD LEFT  
171523-DL



DOUBLE THRESHOLD RIGHT  
171523-DR

## 171525-L

60 x 36 x 5.5"  
THRESHOLD: SINGLE  
DRAIN LOCATION: LEFT

## 171525-R

60 x 36 x 5.5"  
THRESHOLD: SINGLE  
DRAIN LOCATION: RIGHT



## RECTANGLE SHOWER BASES

60" LENGTH

# 171523

60 x 32 x 5.5"  
THRESHOLD: SINGLE  
DRAIN LOCATION: CENTER

# 171523-DR

60 x 32 x 3.5"  
THRESHOLD: DOUBLE (FRONT & RIGHT)  
DRAIN LOCATION: LEFT

# 171529

60 x 48 x 5.5"  
THRESHOLD: SINGLE  
DRAIN LOCATION: CENTER

# 171523-L

60 x 32 x 5.5"  
THRESHOLD: SINGLE  
DRAIN LOCATION: LEFT

# 171523-DL

60 x 32 x 3.5"  
THRESHOLD: DOUBLE (FRONT & LEFT)  
DRAIN LOCATION: RIGHT

# 171573

60 x 34 x 5.5"  
THRESHOLD: SINGLE  
DRAIN LOCATION: CENTER

# 171523-R

60 x 32 x 5.5"  
THRESHOLD: SINGLE  
DRAIN LOCATION: RIGHT

# 171527

60 x 42 x 5.5"  
THRESHOLD: SINGLE  
DRAIN LOCATION: CENTER

## RECTANGLE SHOWER BASES

OVER 60" LENGTH

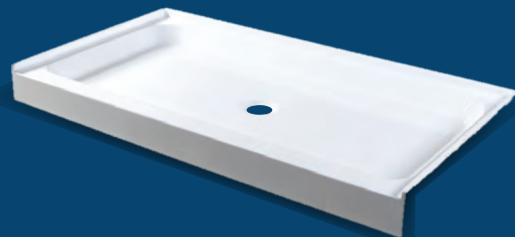
# 171533

72 x 34 x 5.5"  
THRESHOLD: SINGLE  
DRAIN LOCATION: CENTER



# 171583

78 x 36 x 7"  
THRESHOLD: SINGLE  
DRAIN LOCATION: CENTER



## RECTANGLE SHOWER BASES

UNDER 60" LENGTH

### 171505

36 x 42 x 5.5"  
THRESHOLD: SINGLE  
DRAIN LOCATION: CENTER

### 171511

48 x 36 x 5.5"  
THRESHOLD: SINGLE  
DRAIN LOCATION: CENTER

### 171511-DR

48 x 36 x 5.5"  
THRESHOLD: DOUBLE (FRONT & RIGHT)  
DRAIN LOCATION: CENTER

### 171507

42 x 36 x 5.5"  
THRESHOLD: SINGLE  
DRAIN LOCATION: CENTER

### 171511-L

48 x 36 x 5.5"  
THRESHOLD: SINGLE  
DRAIN LOCATION: LEFT

### 171511-DL

48 x 36 x 5.5"  
THRESHOLD: DOUBLE (FRONT & LEFT)  
DRAIN LOCATION: CENTER

### 171509

36 x 48 x 5.5"  
THRESHOLD: SINGLE  
DRAIN LOCATION: CENTER

### 171511-R

48 x 36 x 5.5"  
THRESHOLD: SINGLE  
DRAIN LOCATION: RIGHT

### 171517

42 x 48 x 5.5"  
THRESHOLD: SINGLE  
DRAIN LOCATION: CENTER

### 171518

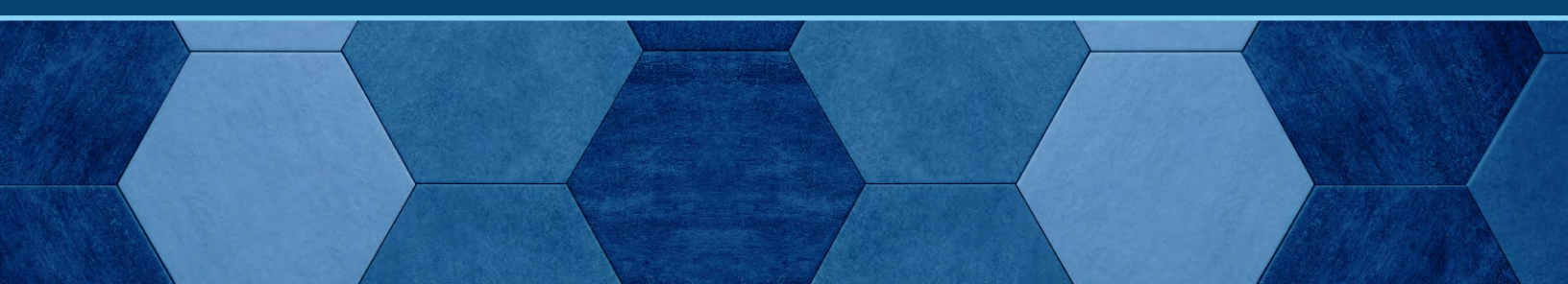
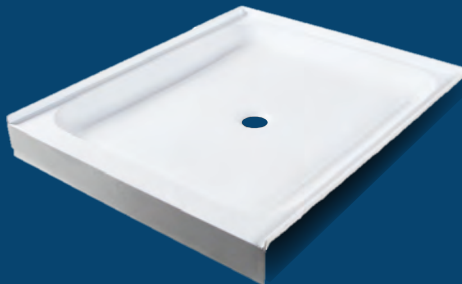
48 x 42 x 5.5"  
THRESHOLD: SINGLE  
DRAIN LOCATION: CENTER

### 171537

50 x 38 x 5.5"  
THRESHOLD: SINGLE  
DRAIN LOCATION: CENTER  
FHA COMPLIANCE ASSIST™

### 171567

40 x 48 x 5.5"  
THRESHOLD: SINGLE  
DRAIN LOCATION: CENTER





## ANGLED AND CURVED SHOWER BASES

# 171551

ANGLED  
35.75 x 35.75 x 5.5"  
THRESHOLD: SINGLE  
DRAIN LOCATION: REAR CENTER

# 171557

CURVED  
39.5 x 39.5 x 6"  
THRESHOLD: SINGLE  
DRAIN LOCATION: REAR CENTER

# 171553

ANGLED  
42 x 42 x 5.5"  
THRESHOLD: SINGLE  
DRAIN LOCATION: REAR CENTER

# 171585

CURVED  
32 x 32 x 5.5"  
THRESHOLD: SINGLE  
DRAIN LOCATION: CENTER

# 171555

CURVED  
35.75 x 35.75 x 6"  
THRESHOLD: SINGLE  
DRAIN LOCATION: CENTER



ANGLED



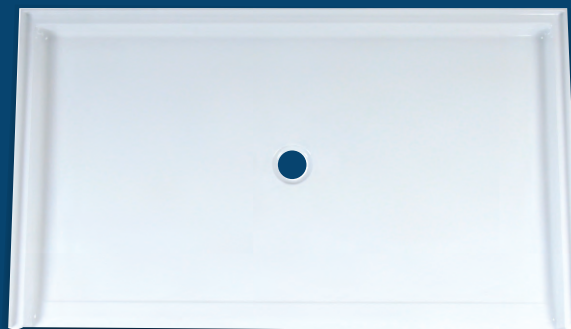
CURVED

## ADA-COMPLIANT SHOWER BASES

### ROLL-IN THRESHOLD

# 171589

62 x 36 x 4.5"  
THRESHOLD: ROLL-IN  
DRAIN LOCATION: CENTER



# 171591

62 x 38 x 4.5"  
THRESHOLD: ROLL-IN  
DRAIN LOCATION: CENTER

# Interquatic™

Interquatic is a plumbing industry leader for state-of-the-art designs, luxury products, and high-quality components accompanied by an industry-leading warranty.

With more than 30 years of experience servicing distributors and the building industry, we pride ourselves on providing our customers with luxury products they desire and can further custom design products to meet specific project demands.

Interquatic sources the best designed products from around the world, manufactured under the supervision of our in-house quality control specialist. We integrate seamlessly into your supply chain by shipping directly to your showroom or build site.

Learn more about all our products at [Interquatic.com](http://Interquatic.com)

## INTERQUATIC PRODUCTS

- Free-standing, drop-in, and skirted bathtubs
- Acrylic shower bases
- Free standing and tub mount fillers
- Kitchen, bathtub, and shower faucets, sprayers and handles
- Stainless steel kitchen, bar and utility sinks
- Porcelain vanity sinks



15565 Wright Brothers Drive  
Addison, Texas 75001  
(214) 572-2000 | [Interquatic.com](http://Interquatic.com)

Interquatic is a division of Georgetown Building Solutions, LLC

**GEORGETOWN™**  
**BUILDING SOLUTIONS**

BUILD SOMETHING SPECIAL™

2211SB

